

Build #557 Update

Build Update

NOTE: It's important to ensure that when performing any ATRF-CS updates that:

- **ATRF-CS is not running during the update,**
- **All update files are downloaded from the ATRF-CS site manually and that the update files are run from within the folder where ATRF-CS is installed to,**
- **AutoUpdate.exe is run as an Administrator.**

Open the folder where ATRF-CS has been installed (C:\Program Files (x86)\ATRF\ATRFCS in many cases.)

Open a web browser and browse to <http://atrfcs.atrf.com>

Download the **ATRF-CS Update Utility** and **Current ATRF-CS Build** and place into the open folder.

ATRF-CS Software Downloads

Download the ATRF-CS Server Installation Package [here](#).

Download the ATRF-CS Workstation Installation Package [here](#).

Download the ATRF-CS Update Utility [here](#).

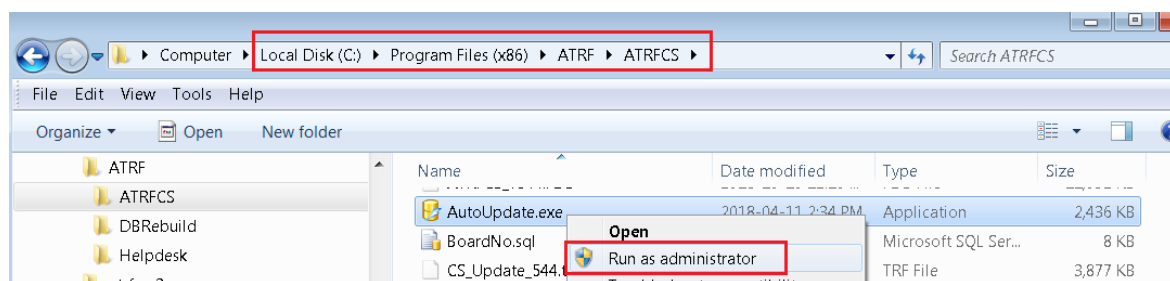
Download the Current ATRF-CS Build [here](#).

Download the Current ATRF-CS Rate File [here](#).

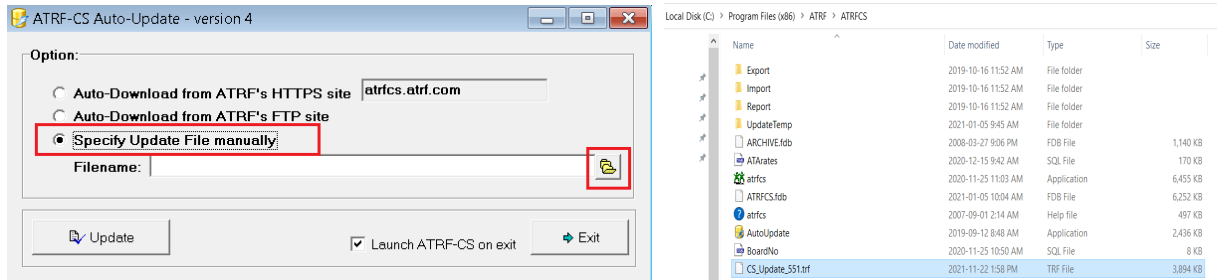
Download TeamViewer 6 [here](#).

NOTE: If your browser does not prompt you for where to save the files, you will need to manually copy **AutoUpdate.exe** and **CS_Update_557.trf** into the open folder.

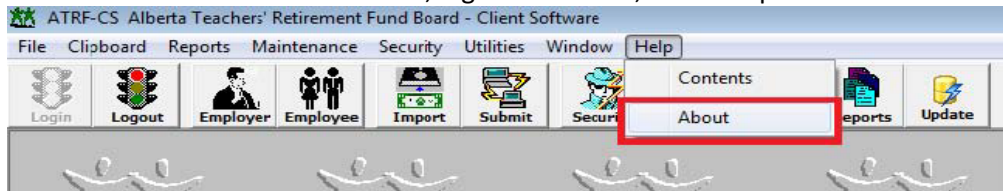
Right click on **AutoUpdate.exe** and select **Run as administrator**.



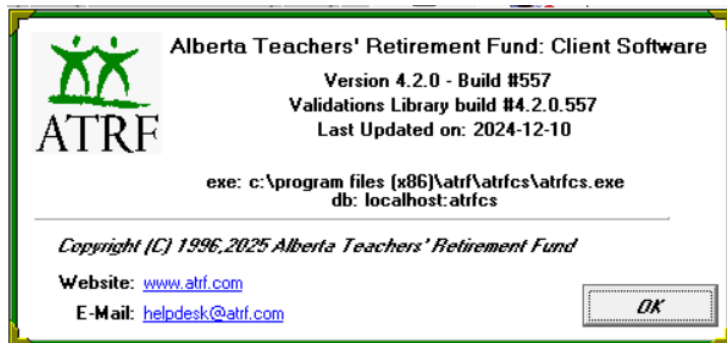
Specify the update file manually and press the folder icon to browse the ATRF-CS installation folder and select the **CS_Update_557.trf** file. Click Update. This will upgrade ATRF-CS to the most current build level.



To ensure latest build was installed, login to ATRF-CS, click “Help” and “About”



The Build should now be #557



From the “Maintenance” menu, choose “View All Rates”. The rates should now have new expiry dates. If not, then AutoUpdate.exe was not Run as administrator, or the ATRF-CS application was open. Please retry the update as administrator.

Sample rate:

Parameter Name	Amount	Valid From	Valid To
Salary Cap	195313.50	01.01.2023	31.12.2023
Salary Cap	201050.00	01.01.2024	31.12.2024

Parameter Name	Amount	Valid From	Valid To
Yearly Maximum Pensionable Earnings	66600	01.01.2023	31.12.2023
Yearly Maximum Pensionable Earnings	68500	01.01.2024	31.12.2024